

Stressless®

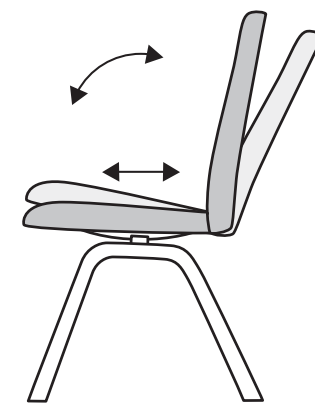


EKORNES® | CONTRACT



A unique chair

Long hours can put a strain on your body. Your natural response is to shift positions. Stressless® chairs work with the body, not against it. With a flexible seat and back, they follow your body's movements in a unique way, and offer a variety of positions for increased comfort. The Stressless® chairs come in a wide variety of designs and functional bases. With reclining back, replaceable base, seat and back cushions, and 10 years warranty on inner parts and mechanism, our Stressless® chairs are perfect for restaurants, guest rooms, meeting rooms, or as a desk chair. Choose a Stressless® chair with the unique BalanceAdapt™-system and Glide™-system.



Choose design, base and upholstery

Never before have so many options been available to help you find the Stressless® chair that's just right. We wanted to make sure that everyone could experience total relaxation, whatever their height or body shape. There are various bases, wood types and luxurious leather and fabric collections to choose from so that can create the chair of your dreams.

Select upholstery in leather or fabric

Stressless® furniture can be delivered in a vast variety of covers and colours. See the whole range of leather and fabric options at ekornes-contract.com



Select base in wood or metal

You can select between four leg styles for the Dining area. All cushion designs in size Large are also available with a Home Office base.

D100

The D100 base is available in four finishes: Natural oak, Whitewash, Black or Walnut.



D200

The D200 base is available in four finishes: Natural oak, Whitewash, Black or Walnut.



Select design and size

Select cushion design (different stitching)
Select high back or low back - or combine
Select Medium or Large size on the seat.



D300

The D300 base is available in three finishes: Chrome, Matte Chrome and Matte Black.



D400

The D400 base is available in three finishes: Chrome, Matte Chrome and Matte Black.



Office

The Home Office base is available in Polished or Matte Black finish.

10
YEAR GUARANTEE

FOR FABRICATION
FAULTS ON INTERNAL
MECHANISM



Stressless® Mint



Stressless® Rosemary



Stressless® Laurel



Stressless® Chilli

Classic legs in solid wood

Leg D100 in solid oak gives the chair a classic and elegant look. The D100 base is available in four finishes: Natural oak, Whitewash, Black or Walnut.



Stressless® Laurel
Low back

Stressless® Laurel
Low back (L)

Stressless® Laurel
Low back (L) with arm



Stressless® Laurel
High back

Stressless® Laurel
High back (L)

Stressless® Laurel
High back (L) with arm



Stressless® Laurel D100 (L) Low
w/armrest/Calido Dark Grey/Black

Modern design in laminated wood

Leg D200 in laminated wood gives the chair a modern and light appearance. The D200 base is available in four colors: Natural Oak, Whitewash, Black or Walnut.



Stressless® Laurel
Low back



Stressless® Laurel
Low back (L)



Stressless® Laurel
Low back (L) with arm



Stressless® Laurel
High back



Stressless® Laurel
High back (L)



Stressless® Laurel
High back (L) with arm



Stressless® Laurel Low (L) D100
w/armrest/Calido Light Beige/Whitewash



Stressless® Laurel Low (M) D300
Calido Dark Grey/Matte Black

Slim tapered metal legs

Leg D300 is an option in tapered steel that gives the chair a very light and modern appearance. The D300 base is available in three finishes: Chrome, Matte Chrome and Matte Black.



Stressless® Laurel
Low back



Stressless® Laurel
Low back (L)



Stressless® Laurel
Low back (L) with arm



Stressless® Laurel
High back



Stressless® Laurel
High back (L)



Stressless® Laurel
High back (L) with arm

Stressless Chili Low (M), D400
Paloma New Cognac/Matte Black



Classic C shaped legs

Leg D400 has a modern C-shaped design that gives the chair a contemporary appearance. The D400 base is available in three finishes: Chrome, Matte Chrome and Matte Black



Stressless® Laurel
Low back



Stressless® Laurel
Low back (L)



Stressless® Laurel
Low back (L) with arm



Stressless® Laurel
High back



Stressless® Laurel
High back (L)



Stressless® Laurel
High back (L) with arm

Stressless® Laurel Office Low (L)
w/armrest/Calido Dark Grey/Matte Black



Swivel base with casters

Sitting down does not mean you have to sit still. This versatile and comfortable chair, with a functional seat and back, castors, swivel and adjustable seat height, allows you to move around freely and with ease.

The base is available in Chrome or Matte Black finishes. All chairs with the castor base have swivel and height adjustment as standard.



Stressless® Home Office Laurel
Low back (L) with arms



Stressless® Home Office Laurel
High back (L) with arms



Stressless® Home Office Laurel
Low back (L)



Stressless® Home Office Laurel
High back (L)

COLLABORATION



MEETING ROOM



CANTEEN



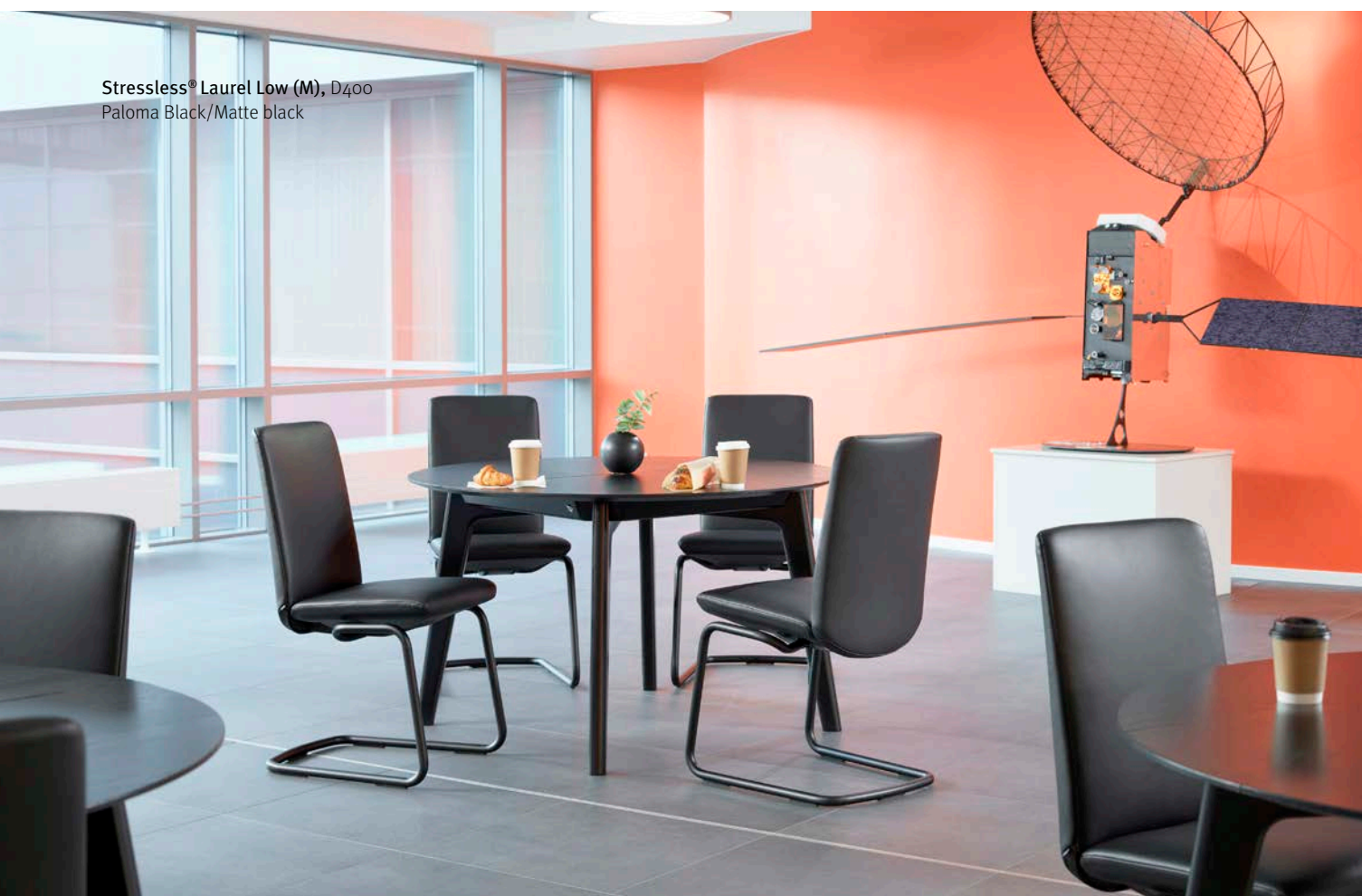
SOCIAL SPACE



Stressless® Laurel Low (M) D300
Paloma Copper/Matte Chrome



SOCIAL AREA



Stressless® Laurel Low (M), D400
Paloma Black/Matte black



Stressless® Chili High (L) w/armrests, D400
Calido Light Grey/Matte Chrome



Stressless® Laurel Home Office Low (L) w/armrests
Paloma Dark Henna/Matte black

SOCIAL AREA



BOARDROOM



HOSPITALITY AND RESTAURANT





Stressless® Laurel Low D200
w/armrest / Paloma Copper / Black
-Raus Restaurant

HOTEL ROOM

Stressless® Laurel High (L) D200
Calido Dark Grey/Black



Stressless® Mint Low (L) w/armrests, D300
Paloma Almond/Matte Chrome
-Hotel Quality Ålesund



Stressless® Laurel Home Office Low (L)
w/armrest/Clover Light Beige/Matte Black



MARITIM



SUSTAINABLE

At Stressless® we are proud caretakers of the beautiful scenery that surrounds the factory in Norway. In addition to this, we are delighted to offer products that are made with extra focus on the environment and sustainability - both in our choice of materials and in our production.

Clover is a sustainable classic wool fabric with a modern design and a beautiful calm colour palette. The smooth, soft surface is enhanced by the subdued colours with a melange effect, creating a fabric with distinct character.

Clover is perfect in combination with other natural elements like wood, metal and stone. Clover is a fabric made of 70% wool with 30% viscose added for extra strength and softness. It is manufactured at a renowned Norwegian weaving mill with long traditions.

Composition: 70% wool, 30% viscose

Price group: 5



Light Grey



Light Beige



Funghi



Light Burgundy



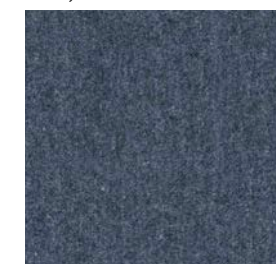
Grey



Mole



Burgundy



Blue

All great choices, naturally.

Being one of the world's largest premium furniture manufacturers comes with responsibility. All our leather is manufactured in keeping with current laws and guidelines for animal welfare, health, safety and the environment. Here, we work alongside recognised international institutions to ensure that we are always up-to-date.

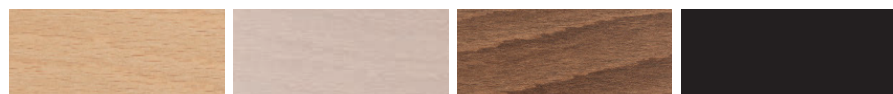
Our inspectors also take part in the leather selection process from our chosen tanneries. We maintain the highest of standards here, so that you always make a great choice – regardless of texture, softness, colour and how you want the leather to look and feel. Today and tomorrow. For this collection we offer two types of leather – from the most popular to the more robust quality.

PALOMA is a slightly corrected leather with a combination of dyes and pigments that smooths down some of the structure (the grain pattern) of the leather. The grain structure in Paloma may however vary a little at some parts of the furniture and also minor colour nuances may appear in the leather. Natural marks, scars and insect bites are natural and will appear in Paloma. A thin coat of lacquer gives Paloma some protection and simplifies cleaning, but Paloma does not have the same heavy duty quality and protection as Batick. Due to its soft, natural and comfortable expression, Paloma is a very popular choice.

BATICK is a corrected, pigment improved and grain embossed upholstery leather, which has had most of its natural marks removed. Batick may have a two-tone colour effect to liven up the surface. Batick is resistant to fading, although changes in colour will occur over time due to use and exposure to light. A protective layer of lacquer simplifies cleaning. Simple cleaning, excellent utilisation properties and a favourable price make Batick a good choice.



Wood colour: Chair



Natural oak

Whitewashed oak

Walnut

Black

Steel colour: Chair



Chrome

Matte Chrome

Matte Black

EKORNES® | CONTRACT

Ekornes AS avd. Contract
Industrivegen 1
N-6222 Ikkornnes Norway
+47 70 25 52 00
<http://www.ekornes-contract.no>